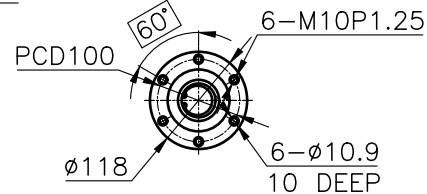
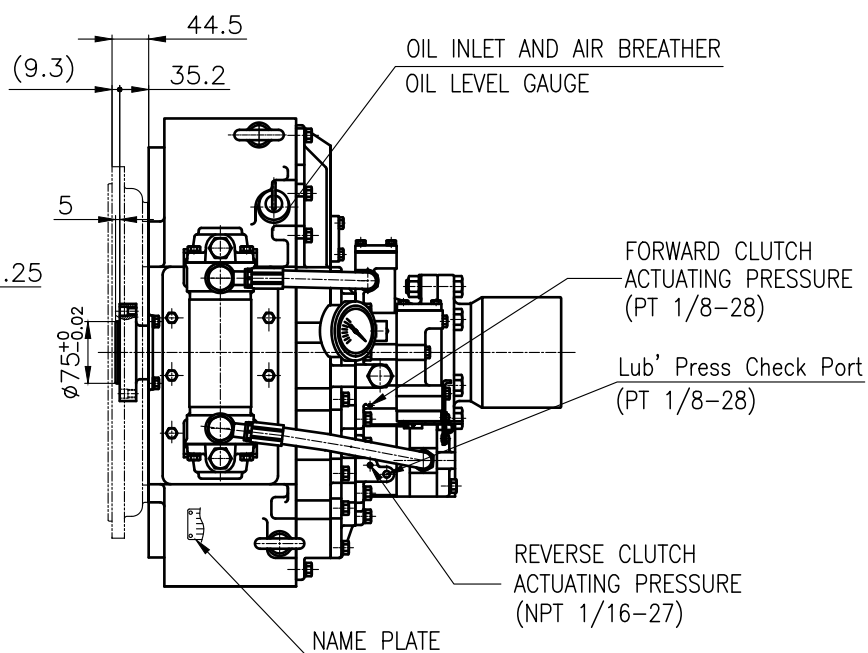


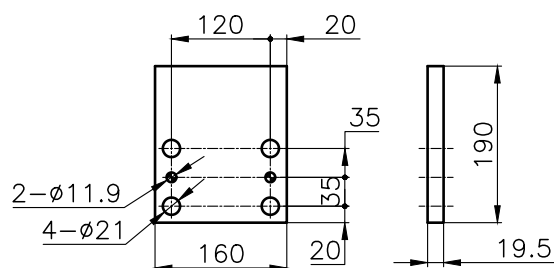
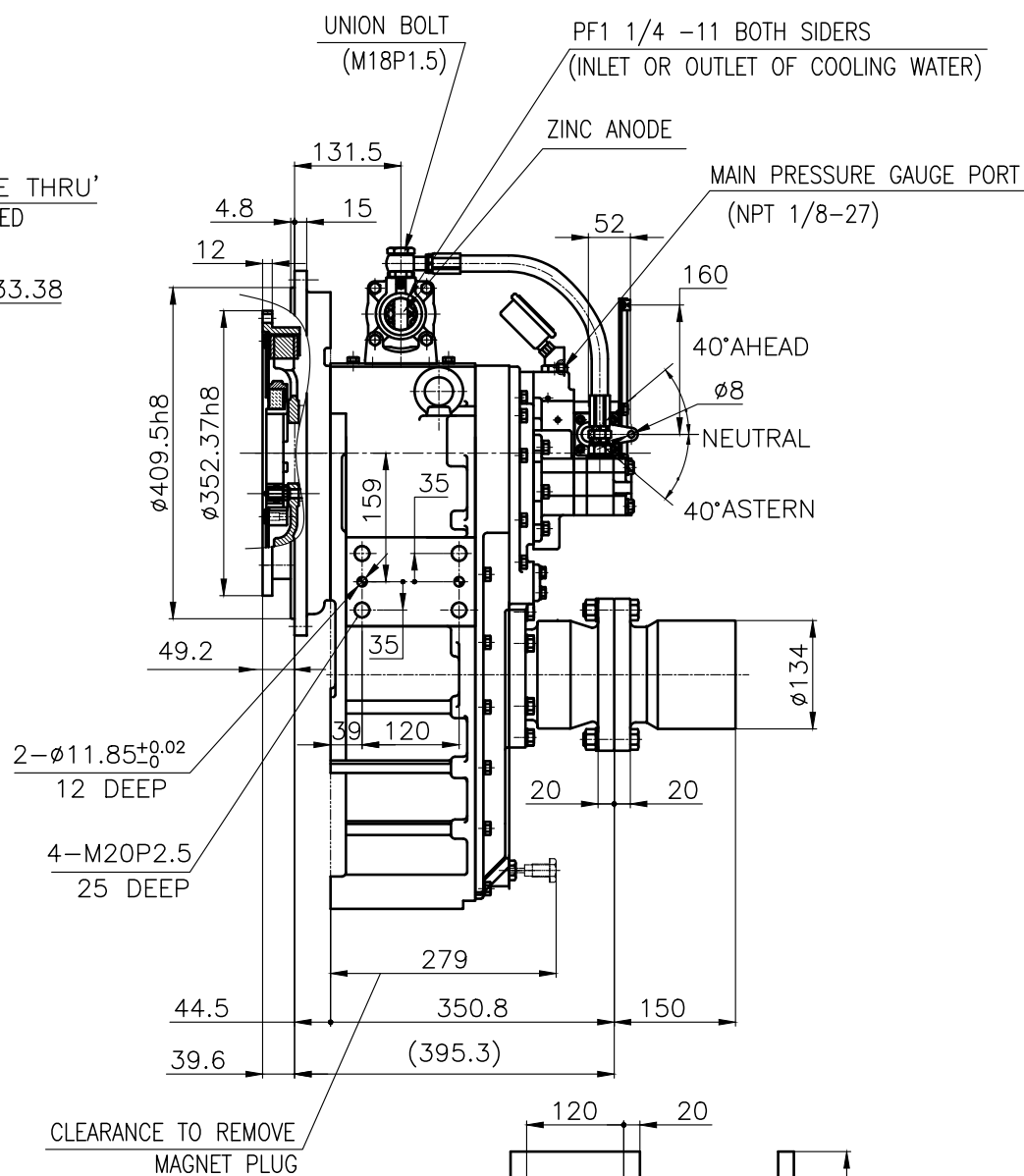
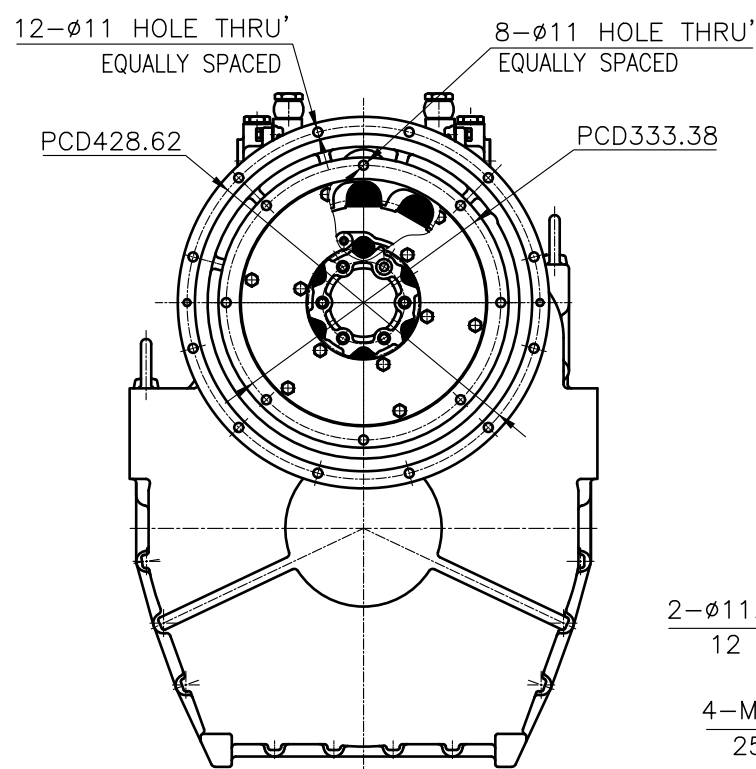
OUTPUT SHAFT COUPLING & PROPELLER COUPLING DIMENSION



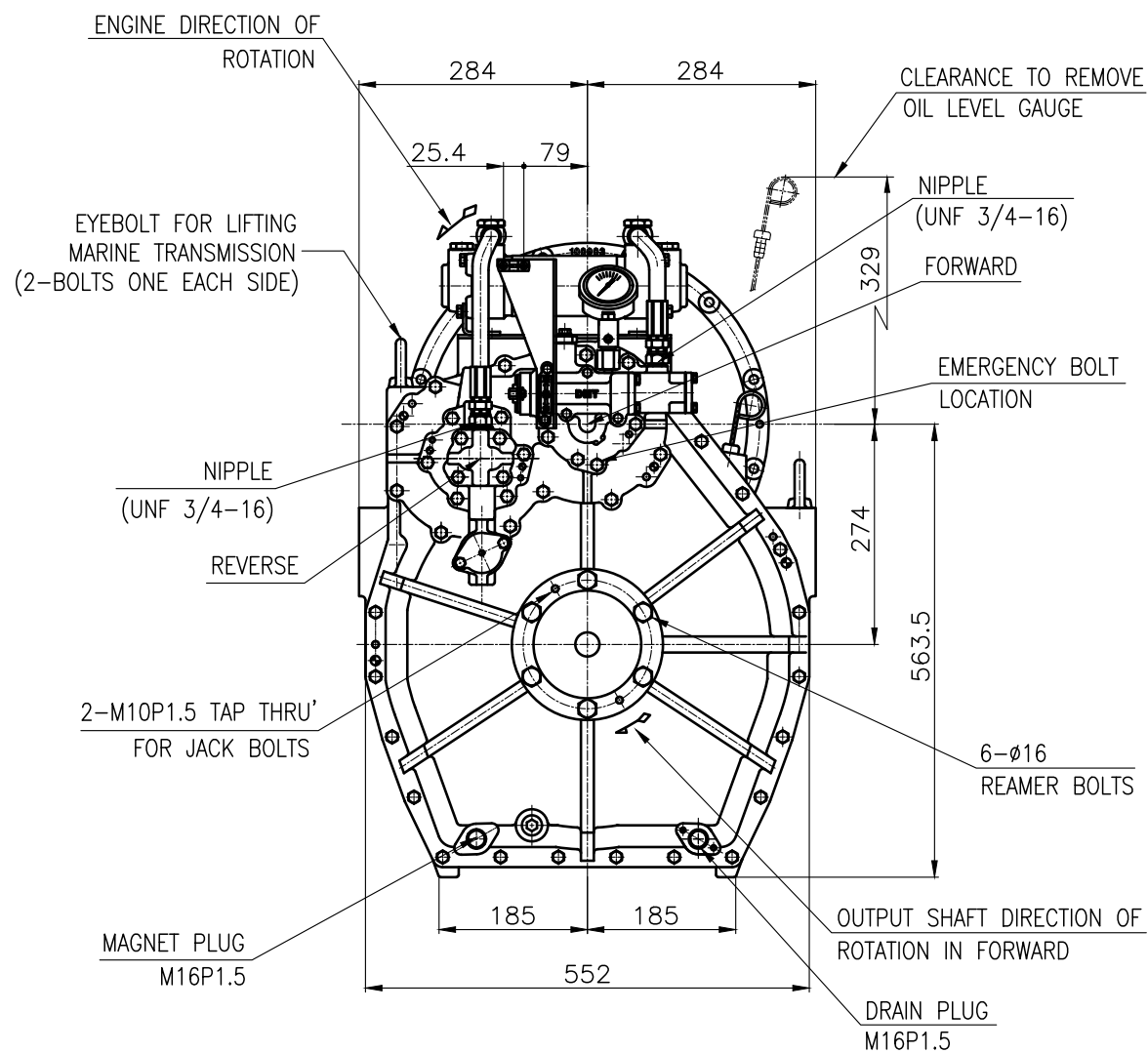
INPUT COUPLING DIMENSION



DMT 100HL MARINE TRANSMISSION SPECIFICATION			
GEAR RATIO	5.29, 5.95, 4.07, 4.50, 4.95		
TOTAL WEIGHT	APPROX. 263 kg(DRY)		
OIL CAPACITY	APPROX. 9.5L		
OIL VISCOSITY	SAE # 30		
OIL PRESSURE	1.96 ~ 2.54 MPa	CLUTCH OIL	
DIRECTION OF ROTATION IN FORWARD	INPUT	C.C.W VIEWED FROM THE STERN	
	OUTPUT	C.W VIEWED FROM THE STERN	
OIL CHANGE INTERVAL	THE FIRST 100HOURS OF INITIAL OPERATION		
	AND EVERY 1000HOURS THEREAFTER		
SHIFTING LIMIT	UNDER 50% OF THE RATED ENGINE SPEED		
OIL COOLER	WATER FLOW 40 ~ 60L/min		
	TEMPERATURE OF COOLING WATER		MAX 32°C
OPERATING TORQUE OF SHIFTING LEVER		UNDER 2.94Nm	



BRACKET DIMENSION



REMARK

1.HOUSING: SAE#3

2.DRIVING RING: SAE 11.5"

3.COUPLING TYPE : DUAL STAGE

4.APPLICATION ENGINE : STANDARD

공 등 공 차 TOLERANCE ON					번호 NO.	품 PART NO.	품 PART NAME 명		개 수 Q'TY	재 질 MATERIAL	규 SIZE	비 고 REMARKS																																			
분 수 FRACTIONS 소 수 DECIMALS 각 도 ANGLES ± ± ±					재 질 MATERIAL				형 식 TYPE	DMT100HL	원 도 번 ORIGINAL DWG. NO.																																				
<div>일 반 차</div> <table><tr><td colspan="5">절 삭 가 공</td></tr><tr><td>구</td><td>현</td><td>조</td><td>급</td><td>정</td></tr><tr><td>1 초 과 4 이 하</td><td>± 0.3</td><td>± 0.1</td><td>± 0.05</td><td></td></tr><tr><td>4 16</td><td>± 0.5</td><td>± 0.2</td><td>± 0.07</td><td></td></tr><tr><td>16 63</td><td>± 0.7</td><td>± 0.3</td><td>± 0.1</td><td></td></tr><tr><td>63 250</td><td>± 1.2</td><td>± 0.5</td><td>± 0.2</td><td></td></tr><tr><td>250 1000</td><td>± 2.0</td><td>± 0.8</td><td>± 0.3</td><td></td></tr></table>					절 삭 가 공					구	현	조	급	정	1 초 과 4 이 하	± 0.3	± 0.1	± 0.05		4 16	± 0.5	± 0.2	± 0.07		16 63	± 0.7	± 0.3	± 0.1		63 250	± 1.2	± 0.5	± 0.2		250 1000	± 2.0	± 0.8	± 0.3			작성 DATE 2018.06.20	척 도 SCALE N/S	품 명 NAME	MARINE TRANSMISSION	도 번 DWG. NO. 10000GHA~E-3115DC		개정 (REV.) 000
					절 삭 가 공																																										
					구	현	조	급	정																																						
					1 초 과 4 이 하	± 0.3	± 0.1	± 0.05																																							
					4 16	± 0.5	± 0.2	± 0.07																																							
16 63	± 0.7	± 0.3	± 0.1																																												
63 250	± 1.2	± 0.5	± 0.2																																												
250 1000	± 2.0	± 0.8	± 0.3																																												
승 인 APPROVED BY JK.Kim	검 도 CHECKED BY TH.Cha	재 도 DRAWN CH.Baek	설 계 DESIGNED																																												
D-I INDUSTRIAL				크 기 SIZE A 3	코 드 번 호 CODE ID. NO.																																										