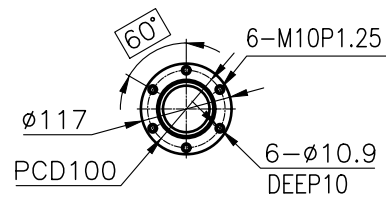
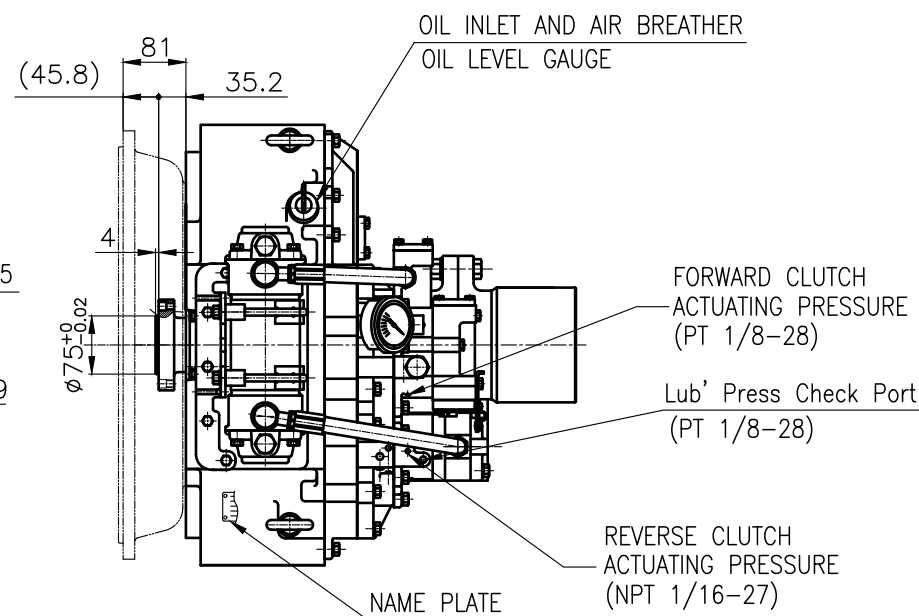


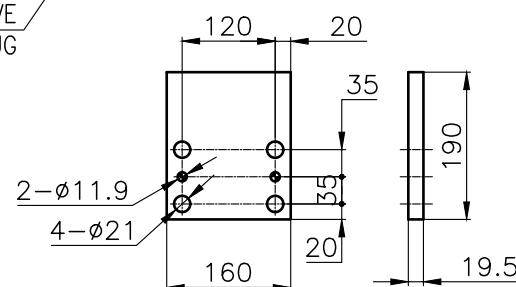
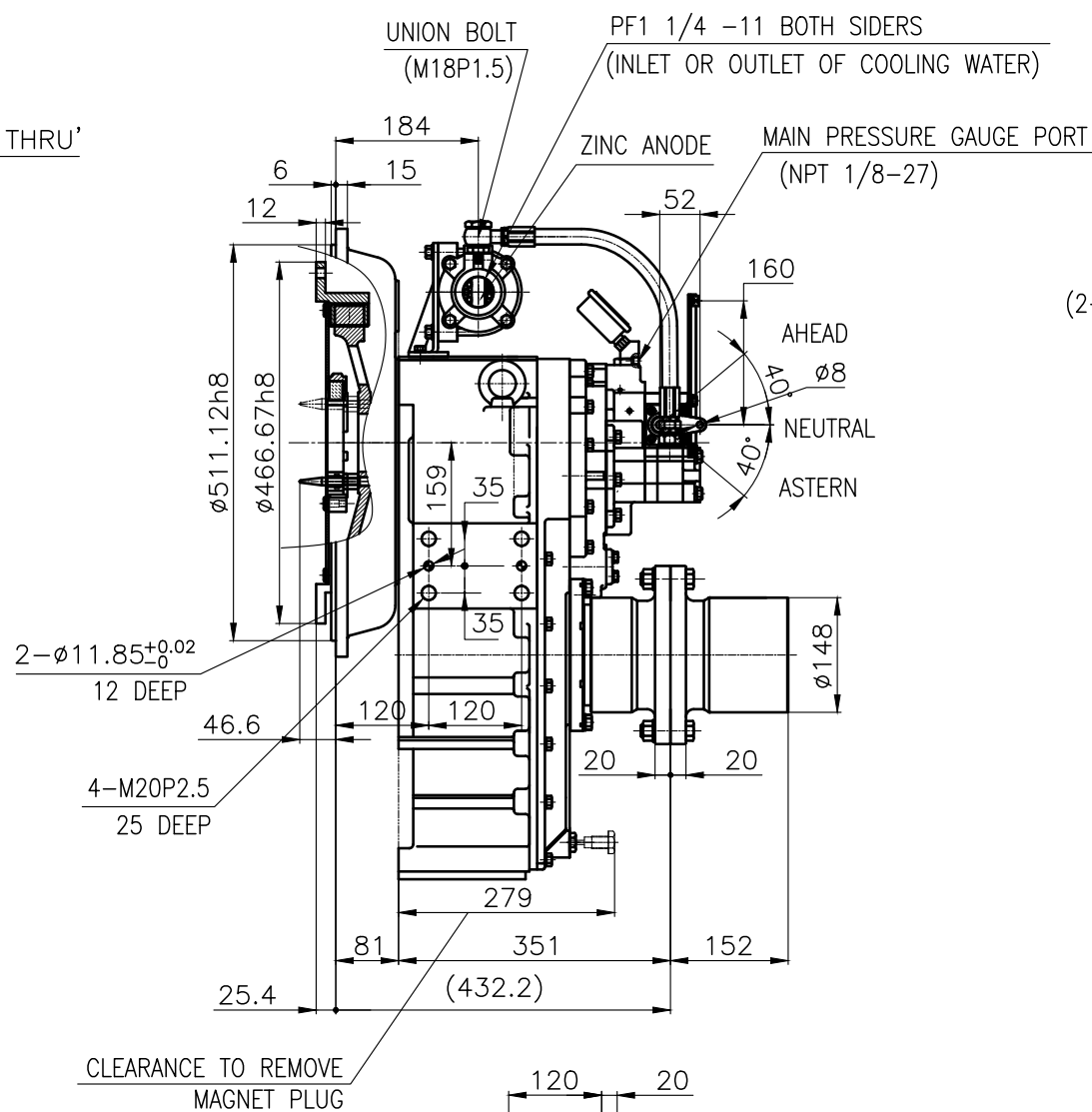
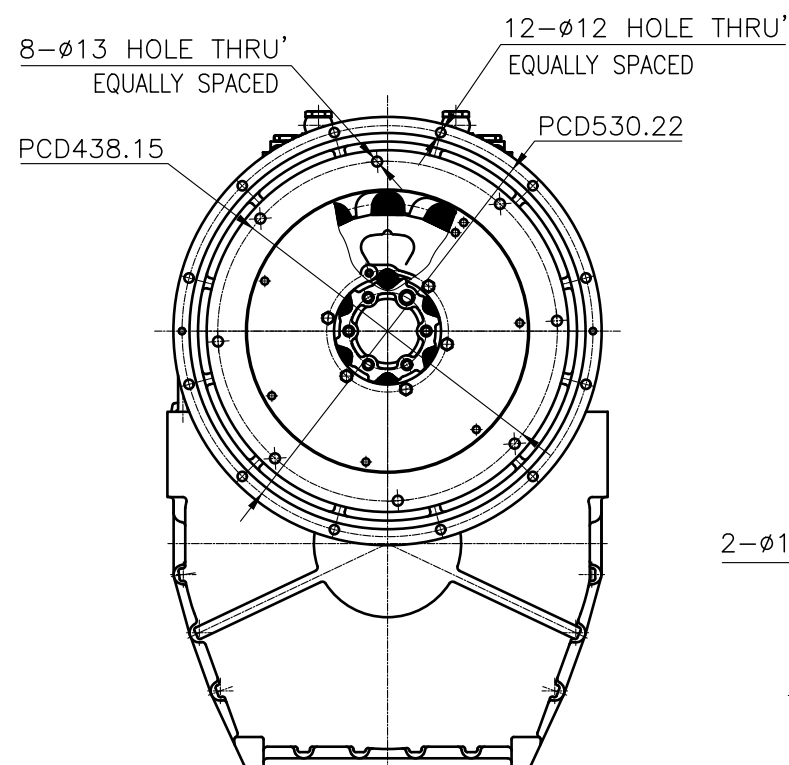
OUTPUT SHAFT COUPLING & PROPELLER COUPLING DIMENSION



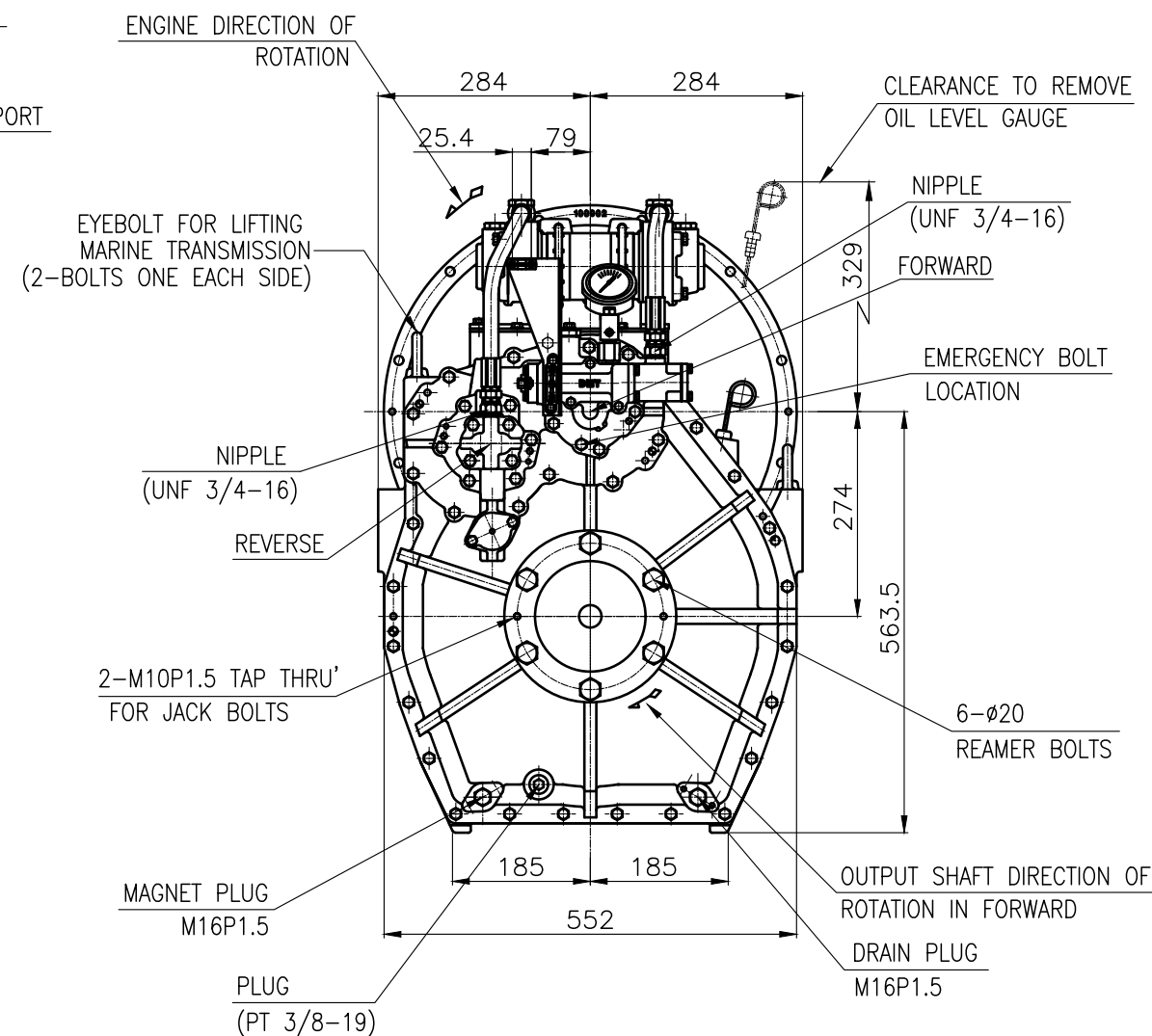
INPUT COUPLING DIMENSION



DMT 135HL MARINE TRANSMISSION SPECIFICATION			
GEAR RATIO	4.07, 4.50, 4.95		
TOTAL WEIGHT	APPROX. 263 kg(DRY)		
OIL CAPACITY	APPROX. 9.5L		
OIL VISCOSITY	SAE # 30		
OIL PRESSURE	1.96 ~ 2.54 MPa	CLUTCH OIL	
DIRECTION OF ROTATION IN FORWARD	INPUT	C.C.W VIEWED FROM THE STERN	
	OUTPUT	C.W VIEWED FROM THE STERN	
OIL CHANGE INTERVAL	THE FIRST 100HOURS OF INITIAL OPERATION		
	AND EVERY 1000HOURS THEREAFTER		
SHIFTING LIMIT	UNDER 50% OF THE RATED ENGINE SPEED		
OIL COOLER	WATER FLOW 40 ~ 60L/min		
	TEMPERATURE OF COOLING WATER		MAX 32°C
OPERATING TORQUE OF SHIFTING LEVER			UNDER 2.94Nm




BRACKET DIMENSION



REMARK (HOT)

- 1.HOUSING: SAE#1
- 2.DRIVING RING: SAE 14"
- 3.COUPLING TYPE : DUAL STAGE
- 4.APPLICATION ENGINE : STANDARD

공 동 명 차 TOLERANCE ON						번호 NO.		품 PART NO.		명 PART NAME		개 수 Q'TY		재 MATERIAL		규 SIZE		비 고 REMARKS	
분 수 소 수 각 도 FRACTIONS DECIMALS ANGLES						재 MATERIAL						형 식 TYPE		DMT135HL		원 도 번 ORIGINAL DWG. NO.			
± — ± — ± —								작성 DATE 2018.06.20		척 도 SCALE N/S		품 명 NAME		MARINE TRANSMISSION					
절 삭 가 공						승 인 APPROVED BY		검 도 CHECKED BY		제 도 DRAWN		설 계 DESIGNED		도 번 DWG. NO.		13500GA~C-114DCH		개정(REV.) 000	
구 대 조 급 종 급 정 급						㉔ D-I INDUSTRIAL						크 기 SIZE		A 3		코 드 번 호 CODE ID. NO.			
1 초과 4 이하 ± 0.3 ± 0.1 ± 0.05																			
4 16 ± 0.5 ± 0.2 ± 0.07																			
16 63 ± 0.7 ± 0.3 ± 0.1																			
63 250 ± 1.2 ± 0.5 ± 0.2																			
250 1000 ± 2.0 ± 0.8 ± 0.3																			