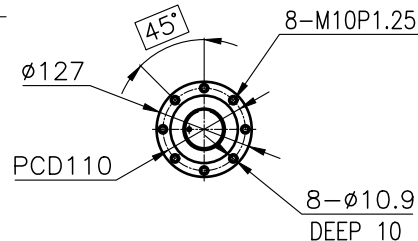
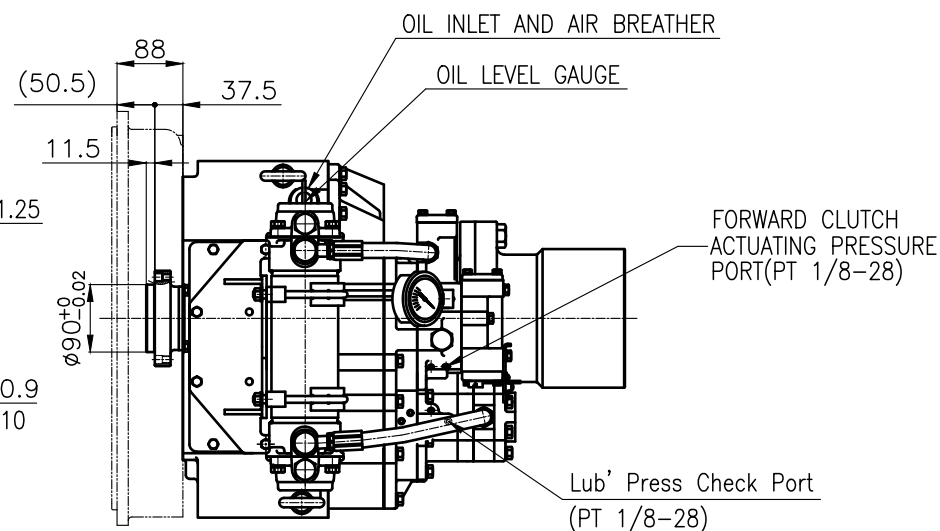


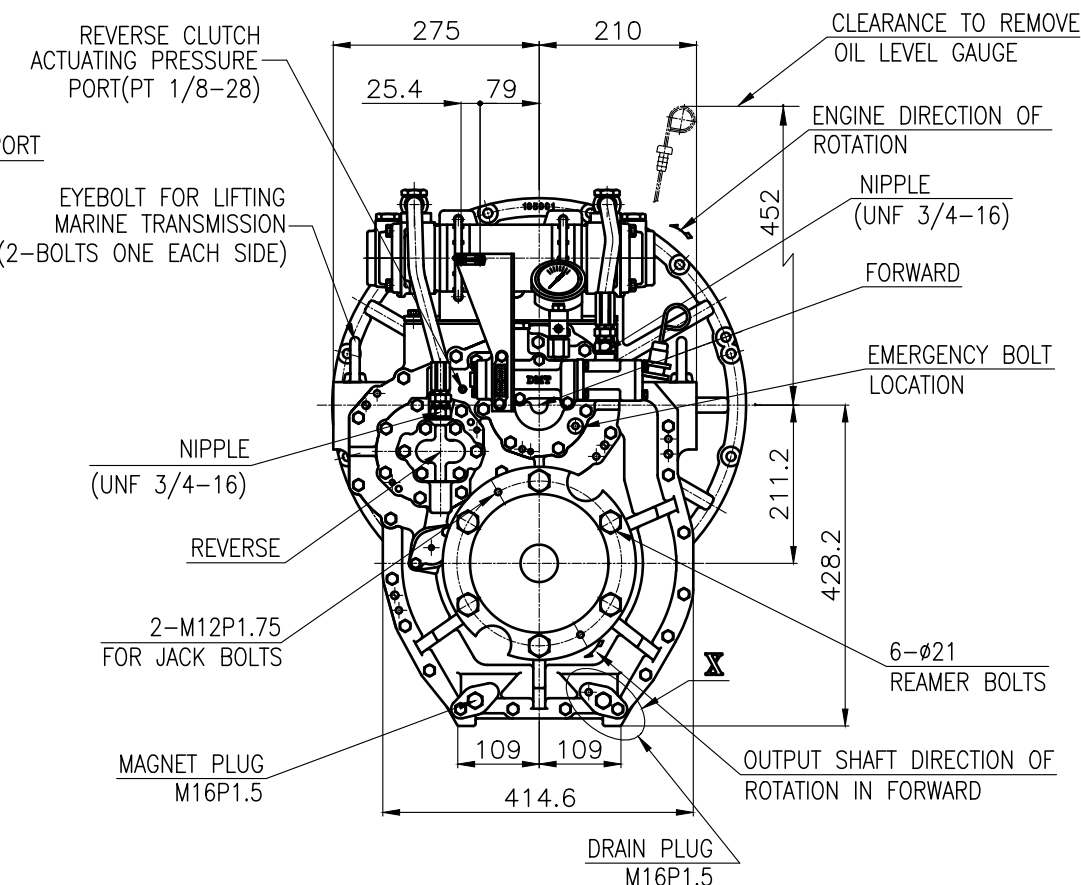
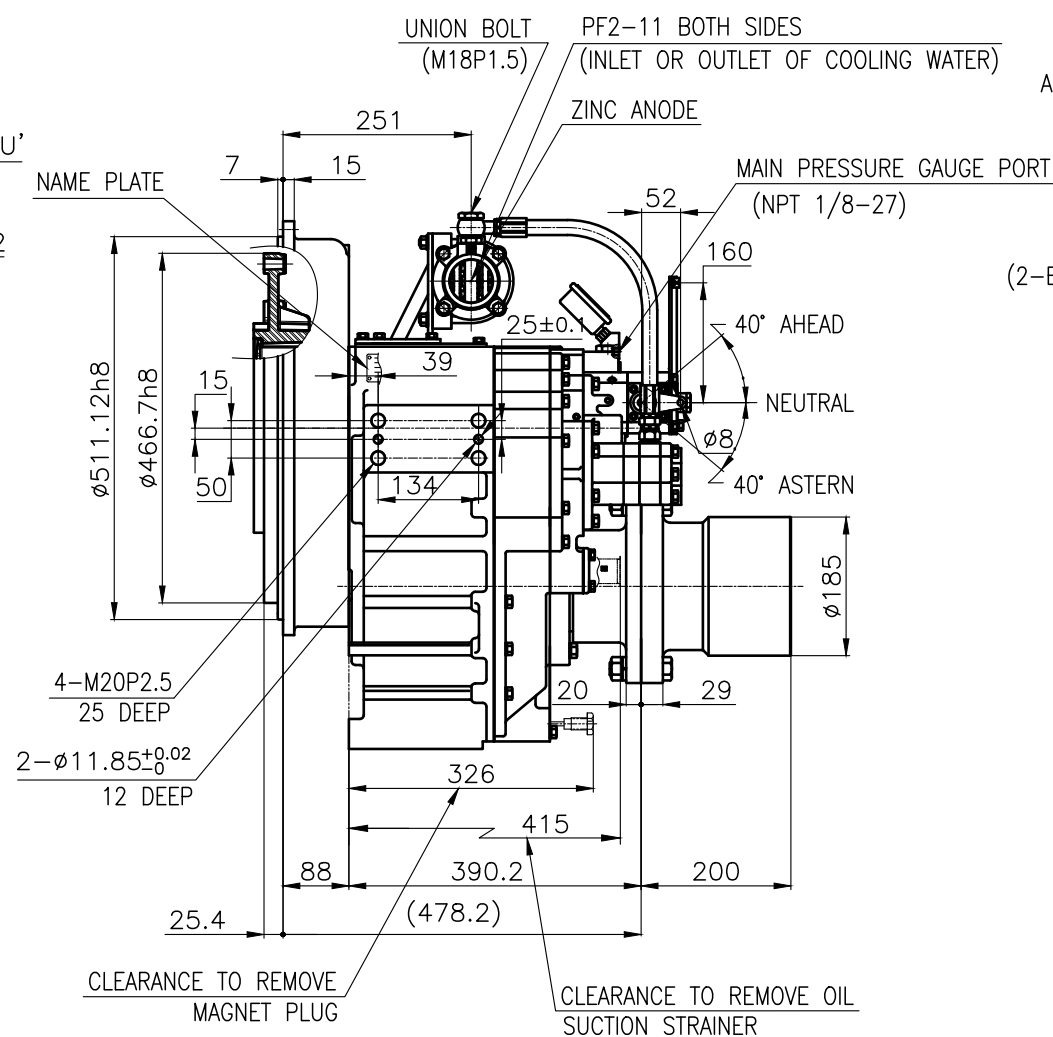
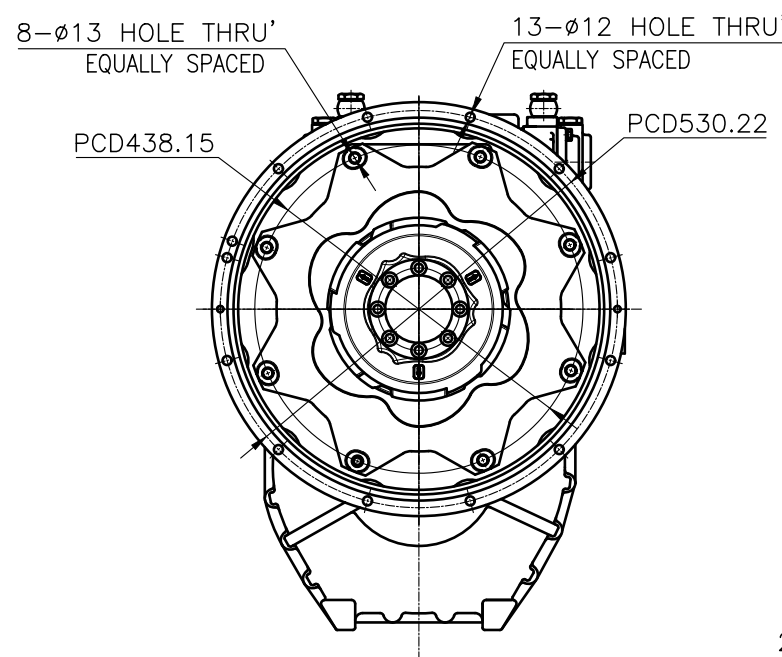
OUTPUT SHAFT COUPLING & PROPELLER COUPLING DIMENSION



INPUT COUPLING DIMENSION



DMT 190H MARINE TRANSMISSION SPECIFICATION			
GEAR RATIO	1.83, 2.09 , 2.52 , 3.08 , 3.43		
TOTAL WEIGHT	APPROX. 300 kg(DRY)		
OIL CAPACITY	APPROX. 5.5 L		
OIL VISCOSITY	SAE # 30		
OIL PRESSURE	1.96 ~ 2.54 MPa		CLUTCH OIL
DIRECTION OF ROTATION IN FORWARD	INPUT	C.C.W VIEWED FROM THE STERN	
	OUTPUT	C.W VIEWED FROM THE STERN	
OIL CHANGE INTERVAL	THE FIRST 100HOURS OF INITIAL OPERATION		
	AND EVERY 1000HOURS THEREAFTER		
SHIFTING LIMIT	UNDER 50% OF THE RATED ENGINE SPEED		
OIL COOLER	WATER FLOW 40 ~ 60L/min		
	TEMPERATURE OF COOLING WATER		MAX 32°C
OPERATING TORQUE OF SHIFTING LEVER			UNDER 2.94Nm



REMARK

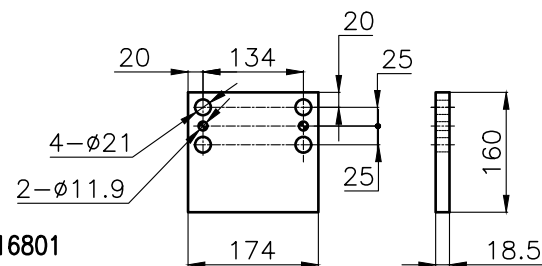
1.HOUSING: SAE#1

2.DRIVING RING: SAE 14"

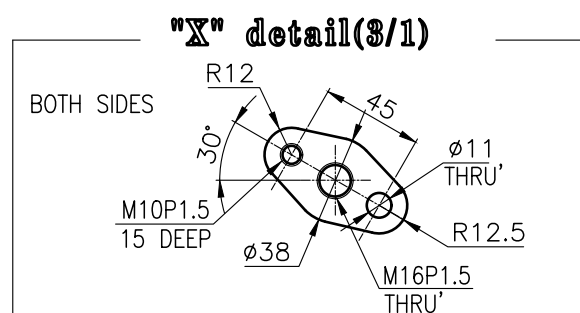
3.COUPLING TYPE

—CENTA Flex Coupling : 77216801

4.APPLICATION ENGINE : STANDARD



BRACKET DIMENSION



공통공차 TOLERANCE ON						번호 NO.		품 PART NO.		품 PART NAME		개 수 Q'TY		재 질 MATERIAL		규 SIZE		비 고 REMARKS					
분 수 FRACTIONS 소 수 DECIMALS 각 도 ANGLES ± — ± — ± —						재 질 MATERIAL						형 식 TYPE		DMT190H		원 도 번 ORIGINAL DWG. NO.							
일 분 만 점 소 수 자						구 별		조 급		종 급		정 급		작 성 DATE 2018.06.29		척 도 SCALE 1/1		도 명 MARINE TRANSMISSION					
						1 호과 4 이하		± 0.3		± 0.1		± 0.05		승 인 APPROVED BY JK.Kim		검 도 CHECKED BY TH.Cha		제 도 DRAWN CH.Baek		설 계 DESIGNED		도 번 DWG. NO. 190000A~E-114CFR	
						4 16		± 0.5		± 0.2		± 0.07										개 형 (REV) 000	
						16 63		± 0.7		± 0.3		± 0.1											
						63 250		± 1.2		± 0.5		± 0.2											
250 1000		± 2.0		± 0.8		± 0.3																	
						D-I INDUSTRIAL						크 기 SIZE A 3		코 드 번 호 CODE ID. NO.									