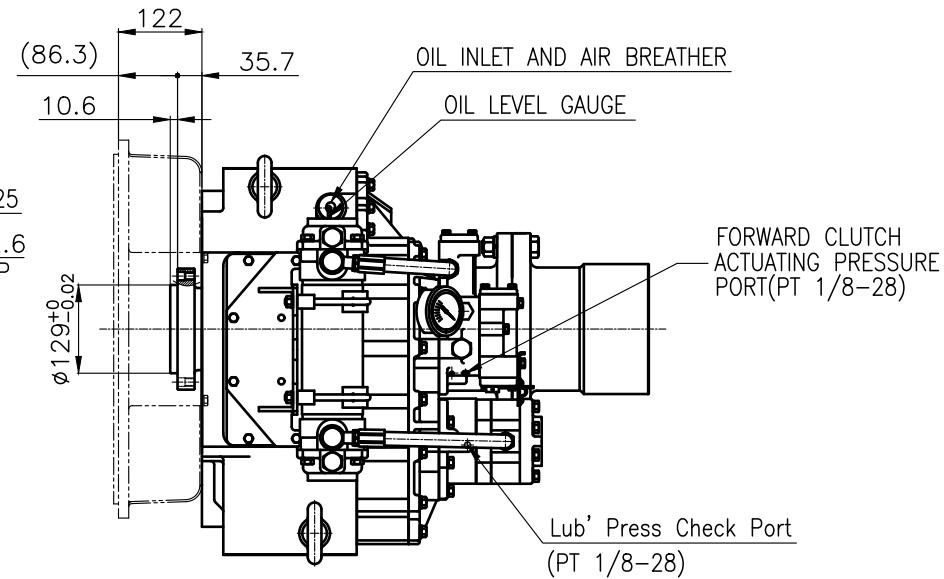
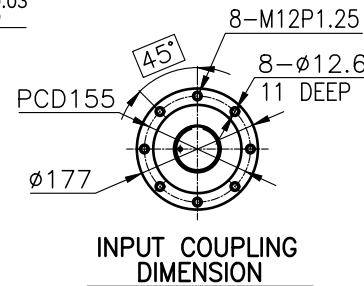
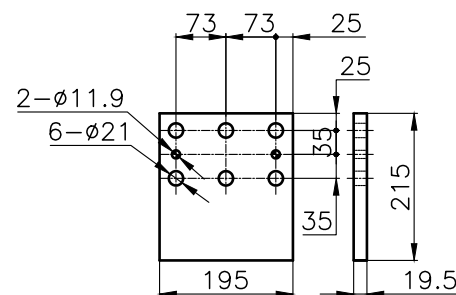
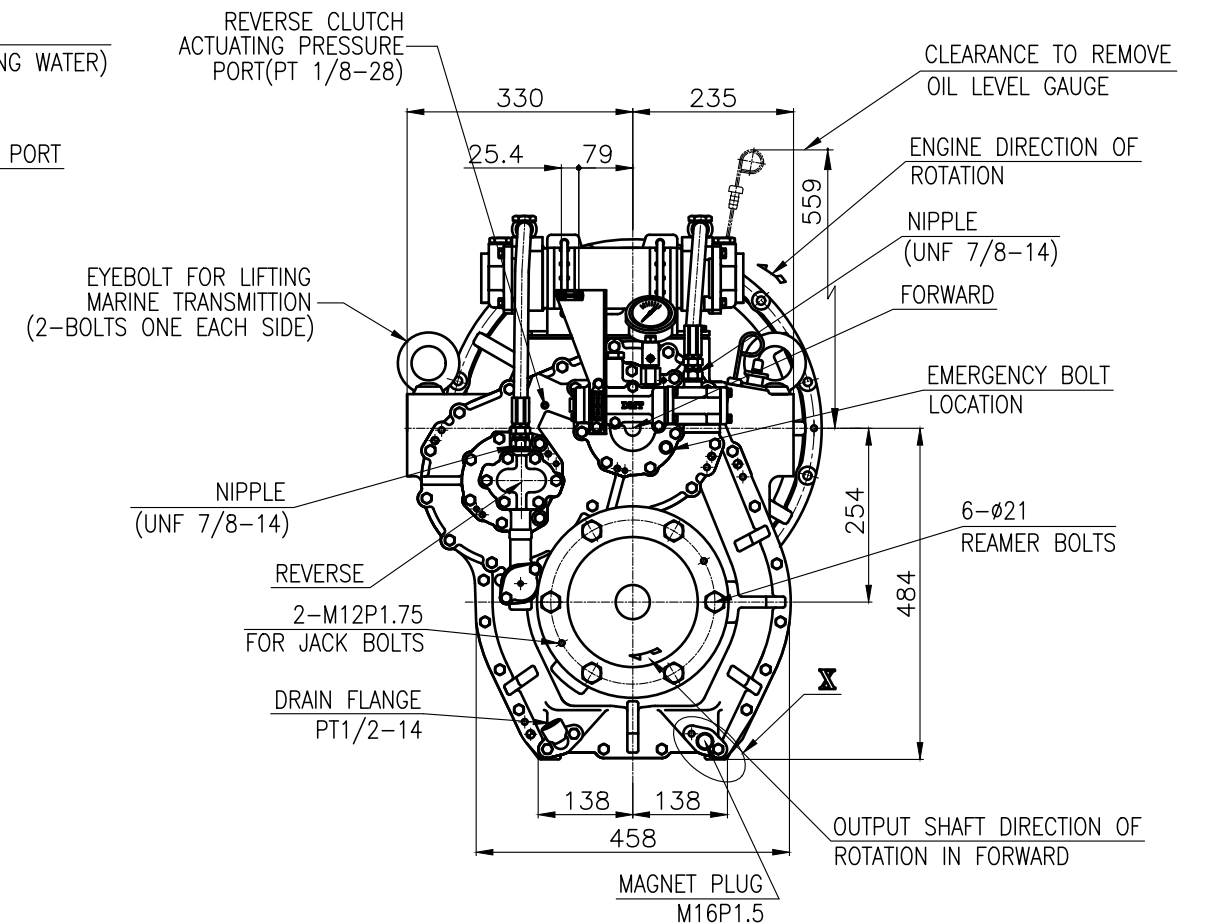
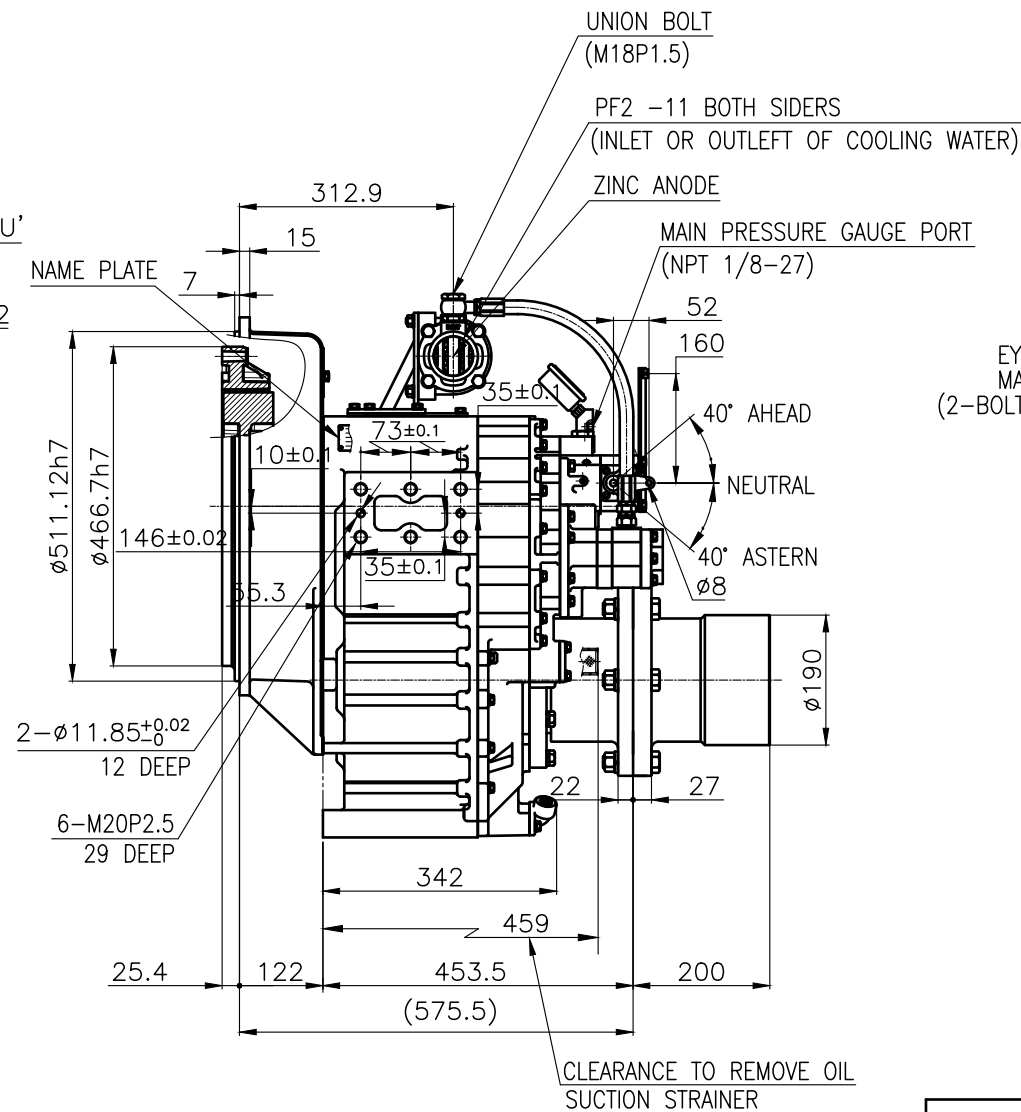
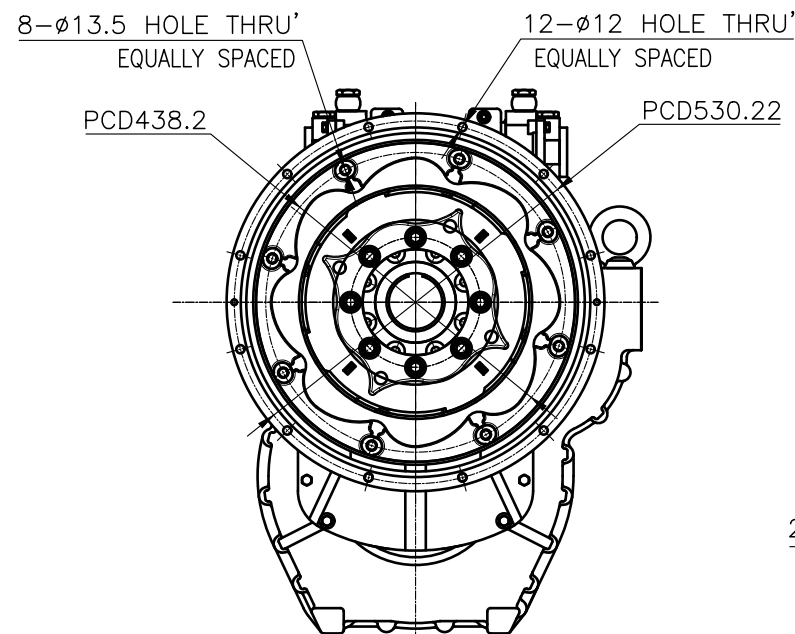


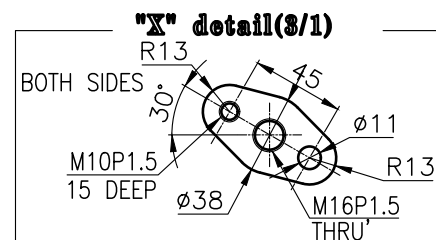
### OUTPUT SHAFT COUPLING & PROPELLER COUPLING DIMENSION



DMT260H MARINE TRANSMISSION SPECIFICATION			
GEAR RATIO	2.06, 2.50, 2.92, 3.26		
TOTAL WEIGHT	APPROX. 490 Kg(DRY)		
OIL CAPACITY	APPROX. 8 L		
OIL VISCOSITY	SAE # 30		
OIL PRESSURE	1.96 ~ 2.54 MPa	CLUTCH OIL	
DIRECTION OF ROTATION IN FORWARD	INPUT	C.C.W VIEWED FROM THE STERN	
	OUTPUT	C.W VIEWED FROM THE STERN	
OIL CHANGE INTERVAL	THE FIRST 100HOURS OF INITIAL OPERATION		
	AND EVERY 1000HOURS THEREAFTER		
SHIFTING LIMIT	UNDER 50% OF THE RATED ENGINE SPEED		
OIL COOLER	WATER FLOW 60 ~ 80 L/min		
	TEMPERATURE OF COOLING WATER		MAX 32°C
OPERATING TORQUE OF SHIFTING LEVER			UNDER 2.94Nm



## BRACKET DIMENSION



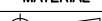
REMARK

1.HOUSING: SAE#1

2.DRIVING RING: SAE 14"

3.COUPLING TYPE

CENTA Flex Coupling (77268801)

공 동 공 차 TOLERANCE ON					번호 NO.		품 PART NO. 번		품 PART NAME 명		개 수 Q'TY		재 질 MATERIAL		규 SIZE		비 고 REMARKS					
분 수 FRACTIONS		소 수 DECIMALS		각 도 ANGLES	<div>재 질 MATERIAL</div> <div>작성 DATE 2018.06.29척 도 SCALE 1/1</div>					형 식 TYPE		DMT260H		원 도 번 ORIGINAL DWG. NO.								
± —		± —		± —																		
정밀가공	정밀가공				<div>승 인 APPROVED BY</div> <div>JK.Kim</div>		<div>검 도 CHECKED BY</div> <div>TH.Cha</div>		<div>제 도 DRAWN</div> <div>CH.Baek</div>		<div>설 계 DESIGNED</div>		품 명 NAME		MARINE TRANSMISSION		도 번 DWG. NO.		25000GA~D-114CFR		개정 (REV.) 000	
	구 분 조 공 종 공 정 공																					
	1 초 과 4 미 하 ± 0.3 ± 0.1 ± 0.05																					
	4 16 ± 0.5 ± 0.2 ± 0.07																					
	16 63 ± 0.7 ± 0.3 ± 0.1																					
63 250 ± 1.2 ± 0.5 ± 0.2				<div>㉔D-I INDUSTRIAL</div>																		
250 1000 ± 2.0 ± 0.8 ± 0.3																						
					크 기 SIZE		A 3		고-드 번호 CODE ID. NO.													