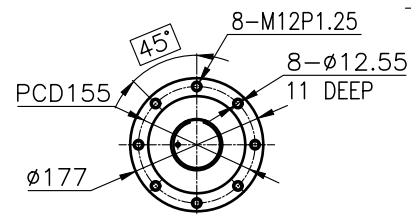
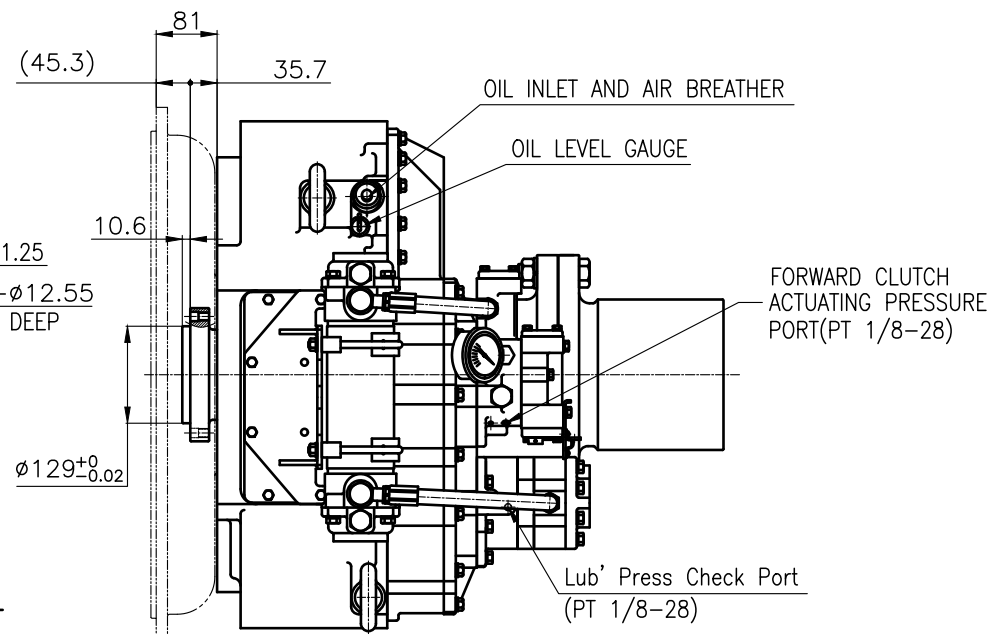


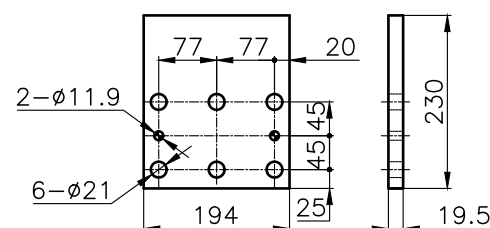
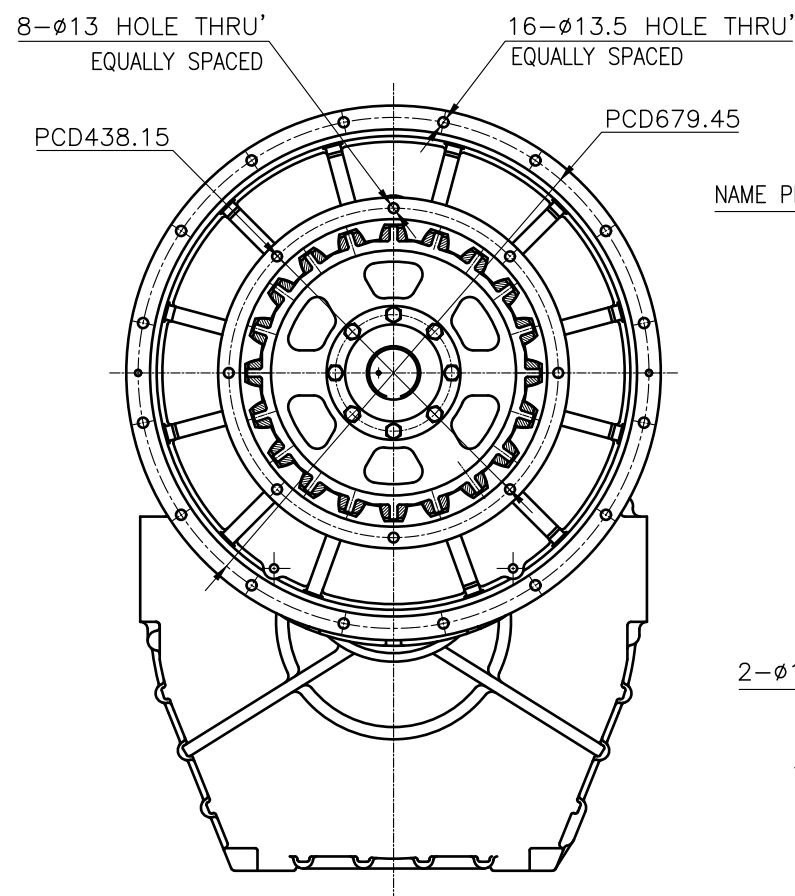
### OUTPUT SHAFT COUPLING & PROPELLER COUPLING DIMENSION



## INPUT COUPLING DIMENSION



DMT260HL MARINE TRANSMISSION SPECIFICATION			
GEAR RATIO	3.53, 4.08, 4.52, 5.04		
TOTAL WEIGHT	APPROX. 640 Kg(DRY)		
OIL CAPACITY	APPROX. 19 L		
OIL VISCOSITY	SAE # 30		
OIL PRESSURE	1.96 ~ 2.54 MPa		CLUTCH OIL
DIRECTION OF ROTATION IN FORWARD	INPUT	C.C.W VIEWED FROM THE STERN	
	OUTPUT	C.W VIEWED FROM THE STERN	
OIL CHANGE INTERVAL	THE FIRST 100HOURS OF INITIAL OPERATION		
	AND EVERY 1000HOURS THEREAFTER		
SHIFTING LIMIT	UNDER 50% OF THE RATED ENGINE SPEED		
OIL COOLER	WATER FLOW 60 ~ 80 L/min		
	TEMPERATURE OF COOLING WATER		MAX 32℃
OPERATING TORQUE OF SHIFTING LEVER			UNDER 2.94Nm



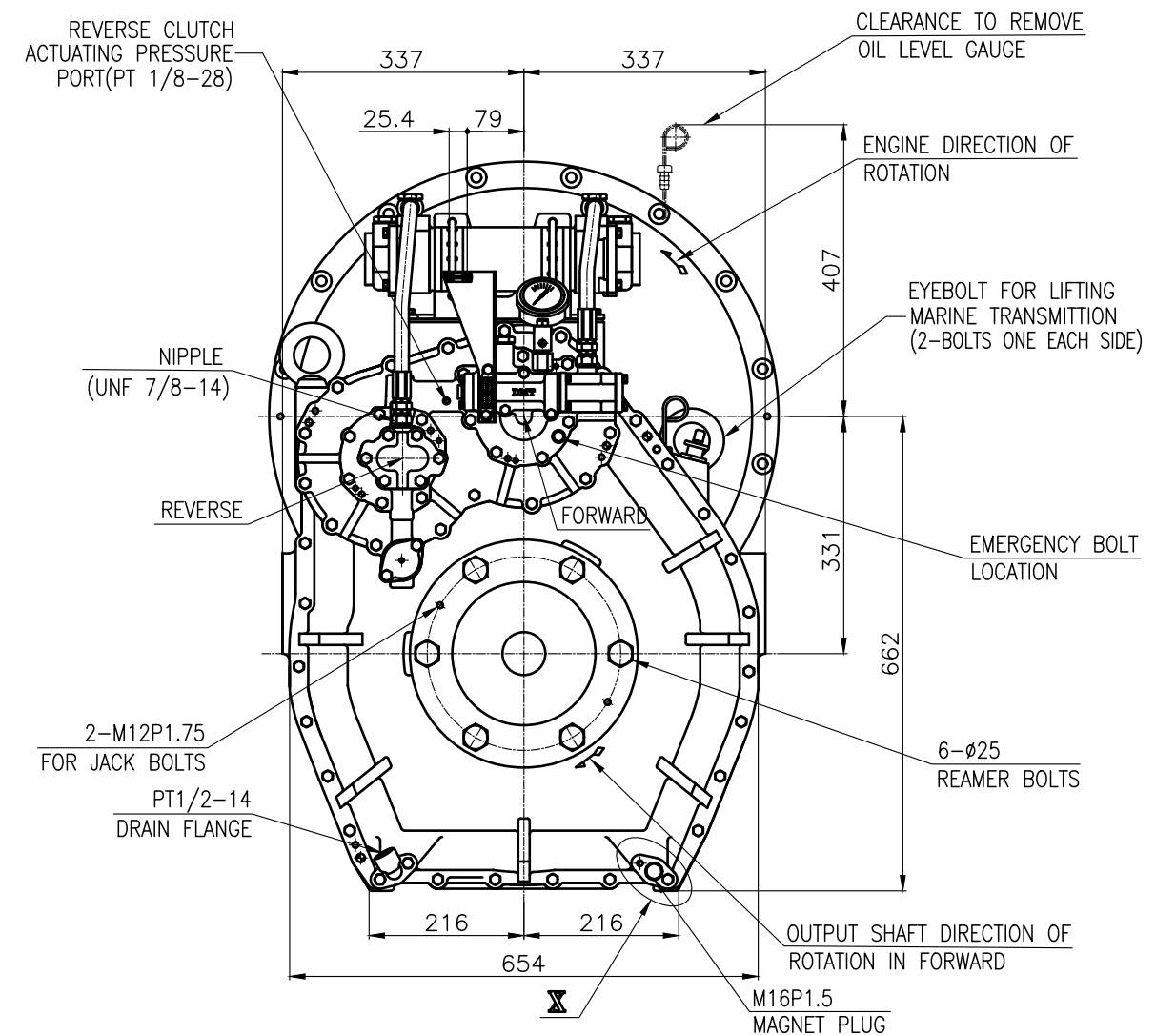
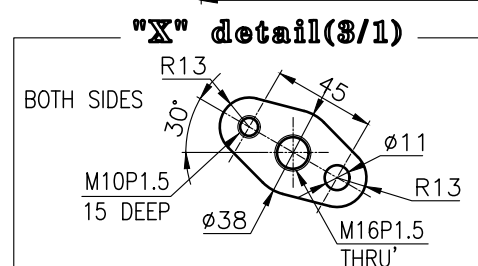
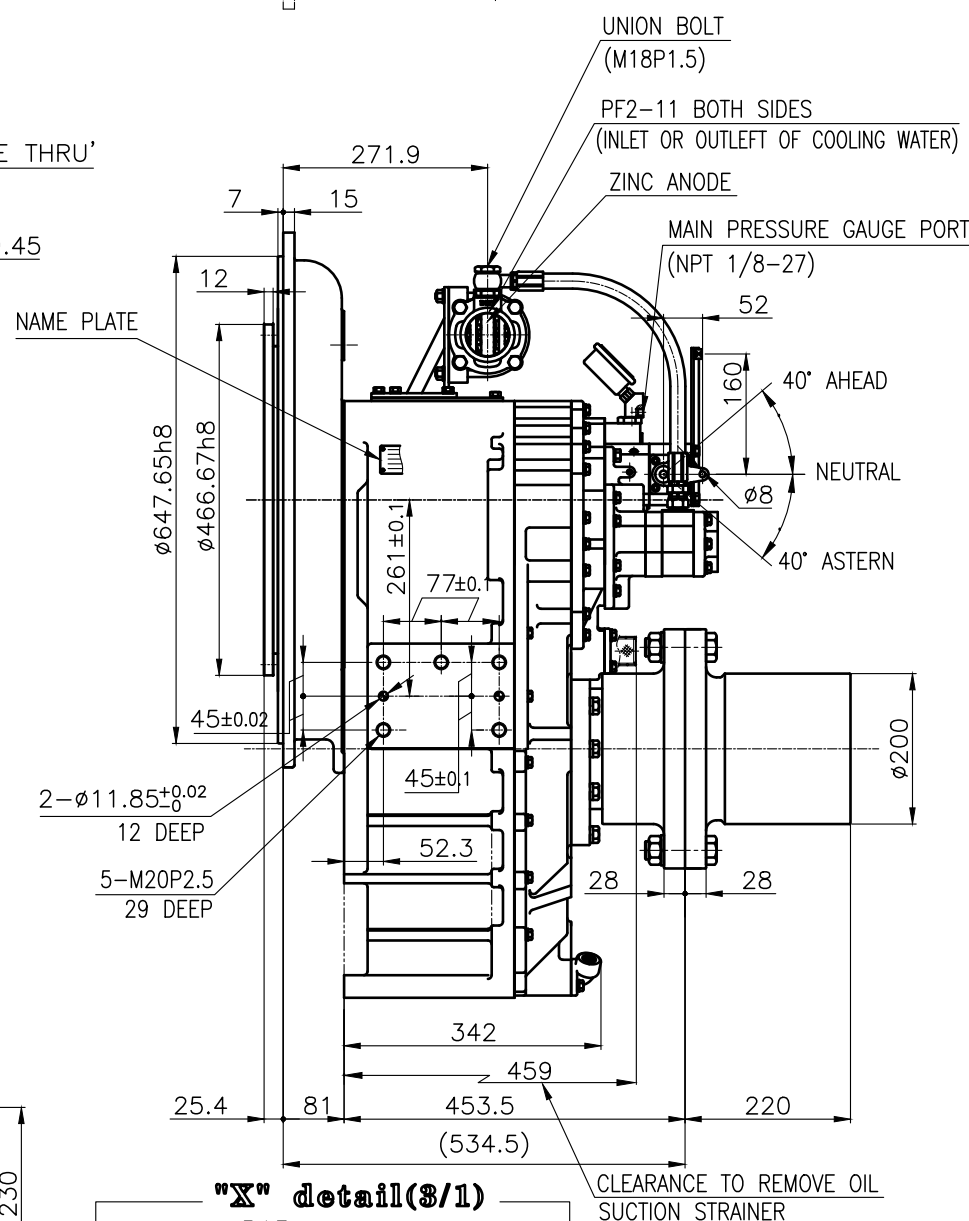
BRACKET DIMENSION

REMARK

1.HOUSING: SAE#0

2.DRIVING RING: SAE 14"

3.COUPLING TYPE : RUBBER



공용 공차 TOLERANCE ON					번호 NO.	품 PART NO.	품 PART NAME		개 수 Q'TY	재 질 MATERIAL	규 격 SIZE	비 고 REMARKS	
분 수 FRACTIONS    소 수 DECIMALS    각 도 ANGLES					재 질 MATERIAL				형 식 TYPE	DMT260HL	원 도 번 ORIGINAL DWG. NO.		
± —    ± —    ± —						작성 DATE 2018.06.29	척 도 SCALE 1/1	품 명 NAME MARINE TRANSMISSION					
일 월 년 차					승 인 APPROVED BY	검 도 CHECKED BY	제 도 DRAWN	설 계 DESIGNED	도 번 DWG. NO.	26000GA~C-014RC	개정 (REV.) 000		
					JK.Kim	KS.Han	BJ.Moon						
									크 기 SIZE	A 3	코-드 번 호 CODE ID. NO.		